

Accessories for Magnetic Particle Inspection

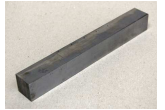
Magnetic Flow/Coil Test Pieces

Part number 026T002

RPS700, TP4 – 5 holes, 200 x 25 x 25 mm

Part number 026T041

BS6072 – 1 hole, 380 x 20 x 20 mm



Current Flow Test Pieces

0-1000A

Part number 026T001

BS6072, RPS700, TP1

1000-3000A

Part number 026T003

RPS700, TP2

3000-5000A

Part number 026T004

RPS700, TP3



Magnetic Field Test Piece

Part number 189838

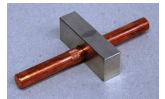
Contains coarse and fine artificial and sub-surface defects in both directions. Meets or exceeds most specifications for artificial test specimens including MIL-STD-271.



Test Block

Part number 026T006

A wet continuous test block (75130) for quality checking purposes.



Test Ring

Part number 026T005

The AS 5282 ring has a number of artificial defects for both Dry Powder and Wet Method and meets ASTM E-1444-05 Table X1.1.



Berthold Penetrameter

Part number 008M006

Checks magnetisation, penetration depth, quality of fluorescent suspension and magnetic field direction.



ASME Field Indicator

Part number 008M003

Used to gauge the strength and direction of the magnetic field in accordance with ASME Boiler and Pressure Vessel Code Section V.



Field Indicator

Part number 008M001

Magnetometer used to determine if a component is magnetised.



Calibrated Field Indicator

Part number 008M002

Scaled to +/- 20 gauss from zero for determining the level of residual magnetism to 5% of full-scale reading.

Part number 505056

As above, except scaled to +/- 10 gauss.



MTU Block

Part number 026T042

MTU test block No 3 (EN-ISO 9934-2) with reference photograph. ASTM E-144-05 X7.2.



Principles of MPI

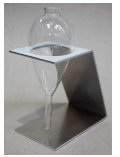
Part number 020B001

A 528 page book covering the theory, science, art and practice of all types of magnetic particle inspection.



Centrifuge Tube and Stand – essential items in ascertaining bath concentration.

Centrifuge Tube Part number 044C003 – for visible ink (Conforms to ASTM E-709-80)
Centrifuge Tube Part number 044C005 – for fluorescent ink (Conforms to ASTM E-709-80)
Centrifuge Stand Part number 044C004



Contact Block

Part number 023A007

Clamps between the head and tailstock of the bench unit to allow prods, split coils etc to be attached



Magnetic Indicator Strips – used to provide a guide to the strength of the magnetic field at the precise point of their location. Comply with EN-ISO 9934-1:2001, RPS700.

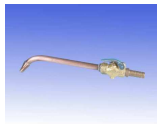
Part number 008M004 Type I for general use
Part number 008M005 Type II for aerospace work



Magnaglo Applicator

Part number 004G006

Replacement nozzle for bath applications. Attaches quickly to bath applicator hose.



Polyspray

Part number 004G004

An inexpensive spray unit for the application of magnetic ink.



Powder Dispenser

Part number 008D003

A powder 'puffer' for the application of dry magnetic powder.



Central conductors – insulated copper bars used where components have through holes, thin wall or offset when insufficient current available for single shot.

Part number 028T002 12 mm diameter x 300 mm long
Part number 028T004 25 mm diameter x 600 mm long



Contact Pads – bench testing units employ contact pads to improve electrical contact with the component. Replacement parts are available as follows:

Part number	Model	Area (mm)	Material
031C003	MAG 50	145 x 125	Copper braid – neoprene
031C010	MAG II/20	45 x 65	Copper braid
031C012	MAG II/20F	60 x 65	Brass mesh
031C014	MAG III	96 x 125	Copper braid
031C016	MAG 40 series	100 x 120	Brass mesh
031C020	MAG 50 series	145 x 125	Copper braid



Q.Q.I. – artificial flaw shim standards improve inspection reliability by verifying magnetic field direction and relative strength of all critical areas of a component. Ideal for multi-directional magnetisation.

Part number 519630 Model KSC-230 Standard, flaw depth 30% of shim thickness
Part number 519631 Model KSC-4-230 Miniature, flaw depth 30% of shim thickness
Part number 519632 Model KSCT-234 Variable depth, flaws 20%/30%/40% of shim thickness



Magnaflux (A Division of ITW Ltd),
Faraday Road, South Dorcan Industrial Estate,
Swindon, Wiltshire, SN3 5HE, UK.

Tel: +44 (0)1793 524566 Fax: +44 (0)1793 490459
Email: sales@magnaflux.co.uk Web: www.eu.magnaflux.com